



Results Review

September 26, 2018

Results WA Measure	Current	Target by 2020	Performance Status
Discover Passes Sold	1,067,545	965,512	Target Met ✓
Fishing & Hunting Licenses	1,995,722	2,526,746	Needs Improvement
Veterans Employment	74%	75%	On Track

OPENING REMARKS

Recreation on Public Lands of Washington

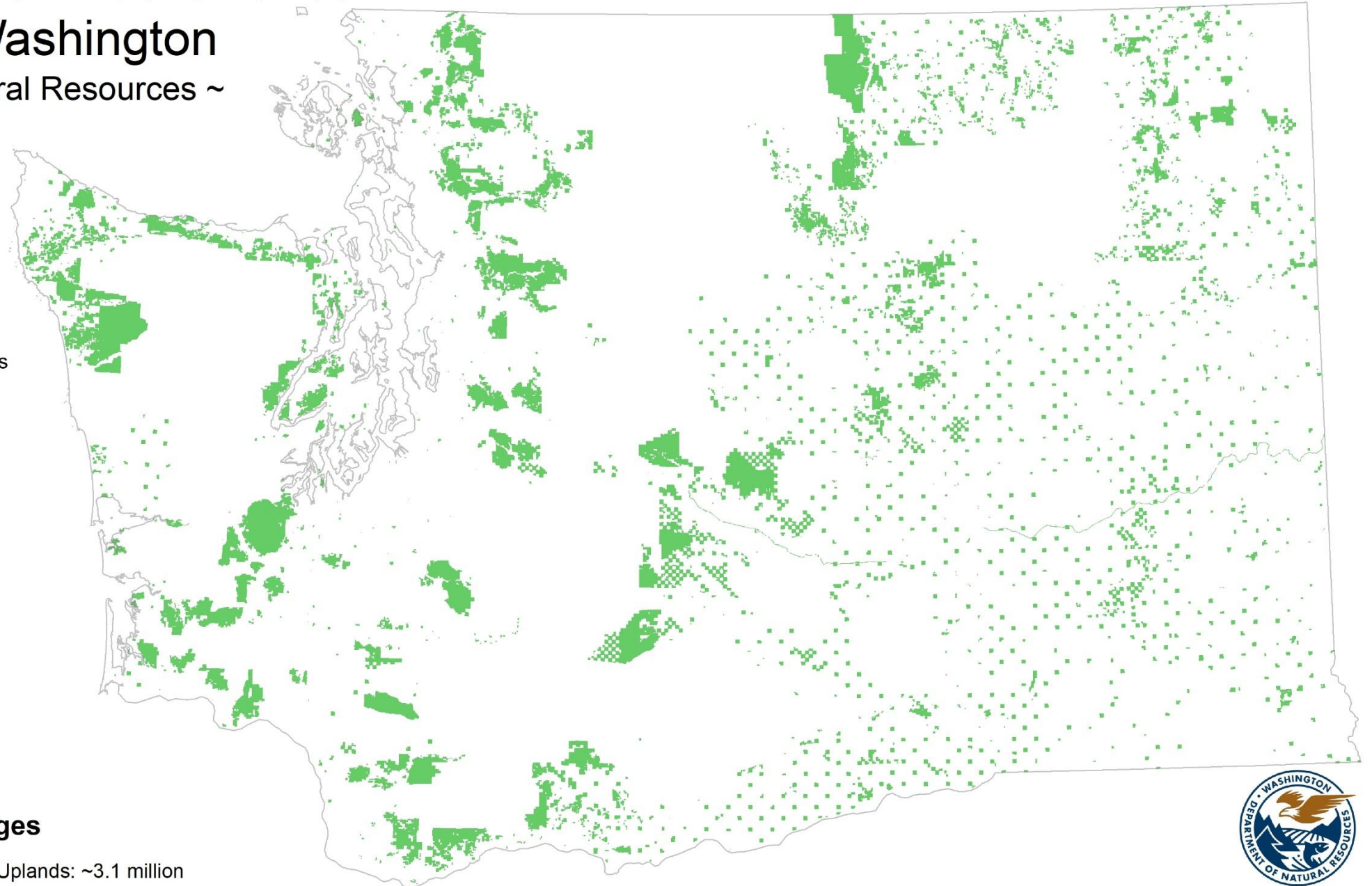
~ Natural Resources ~

Recreation

Natural Resources:
165 sites, ~1200 trail miles

Public Land Acreages

 WA DNR-Managed Uplands: ~3.1 million



Recreation on Public Lands of Washington

Recreation

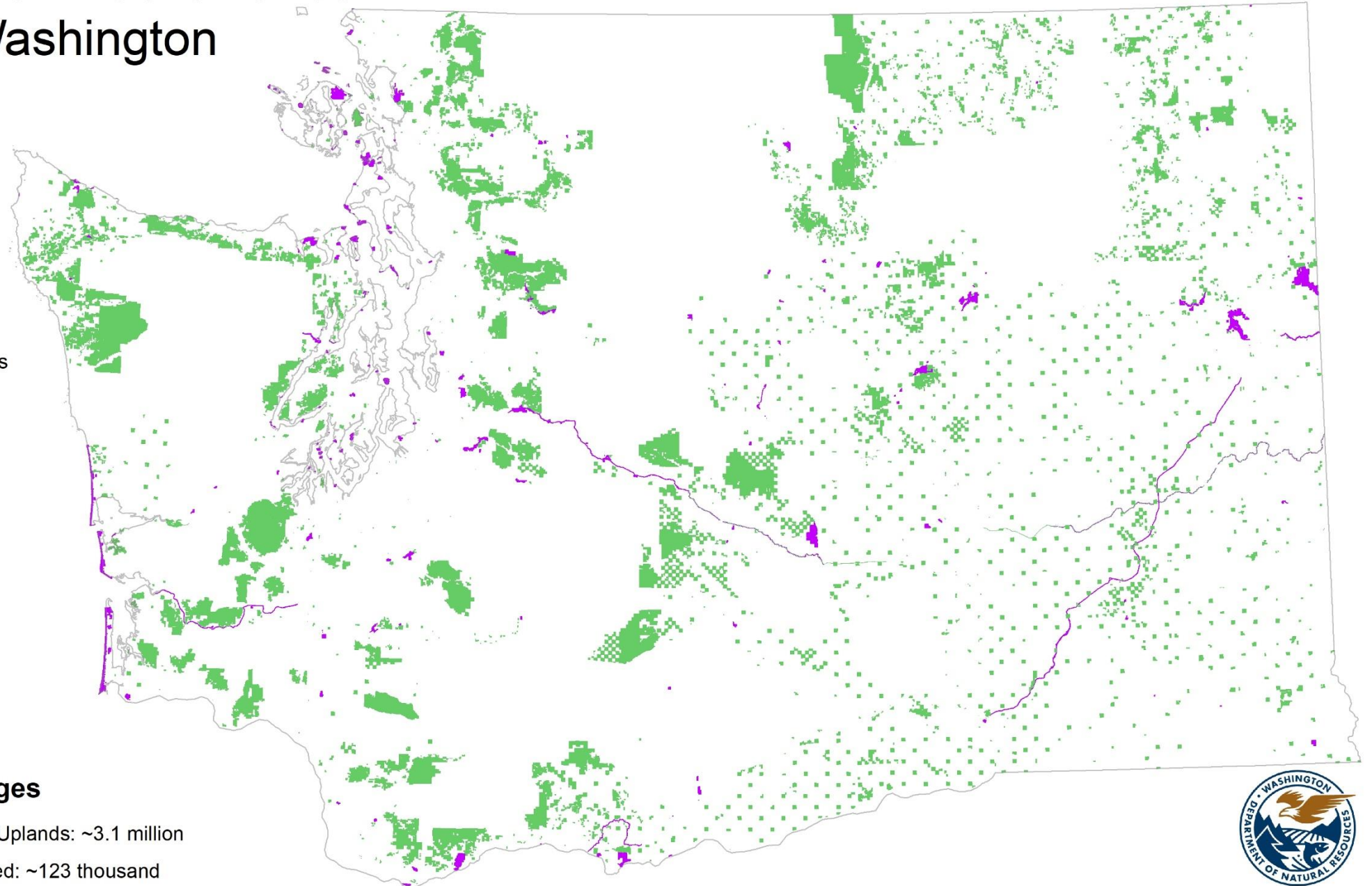
Natural Resources:
165 sites, ~1200 trail miles

State Parks:
125 developed parks,
~1180 trail miles

Public Land Acreages

 WA DNR-Managed Uplands: ~3.1 million

 State Parks-Managed: ~123 thousand



Recreation on Public Lands of Washington

Recreation

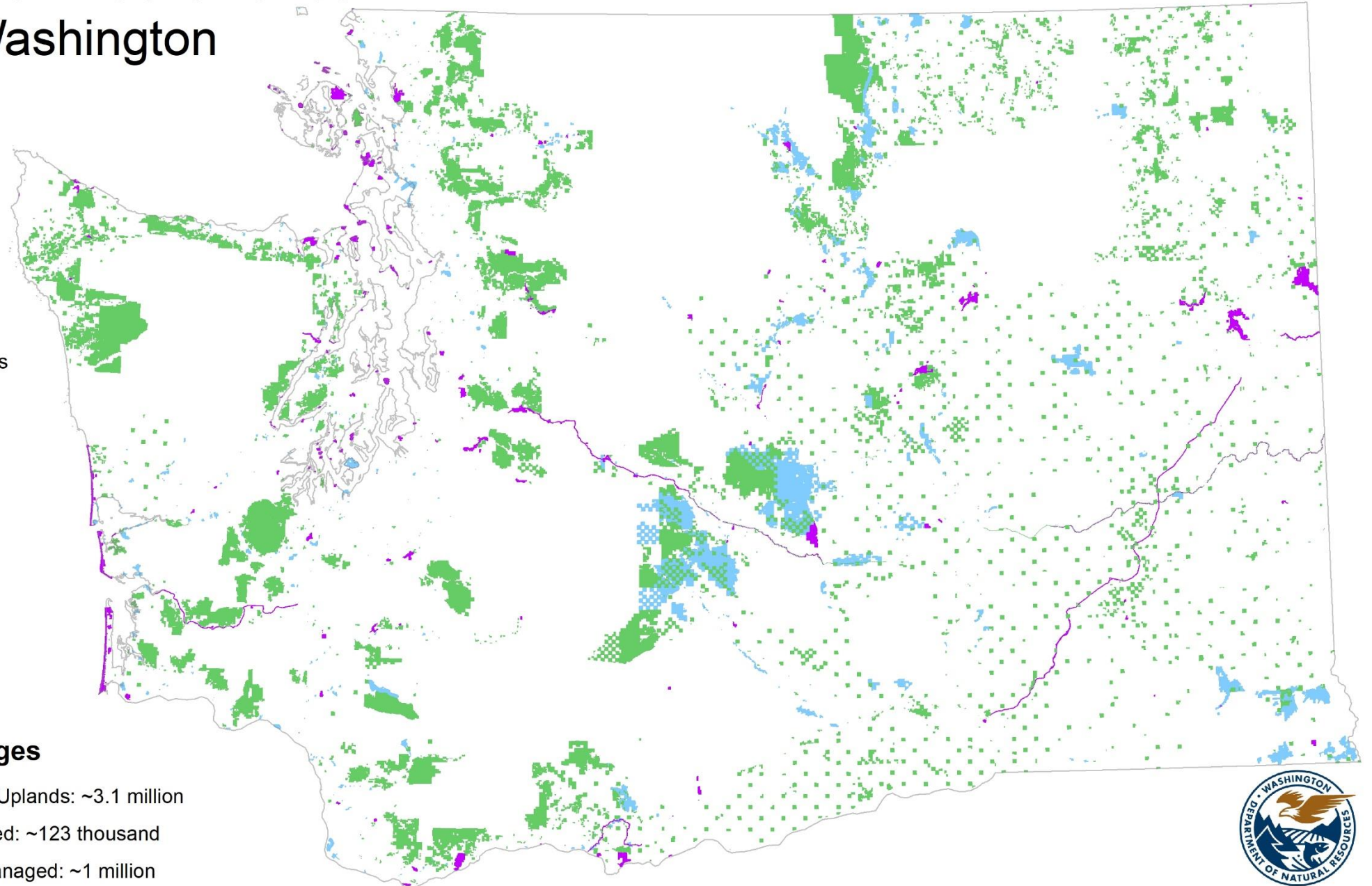
Natural Resources:
165 sites, ~1200 trail miles

State Parks:
125 developed parks,
~1180 trail miles

Fish and Wildlife:
~33 Wildlife areas
comprised of 215 Wildlife
Area Units,
~600 water access sites,
~125 trail miles

Public Land Acreages

-  WA DNR-Managed Uplands: ~3.1 million
-  State Parks-Managed: ~123 thousand
-  Fish and Wildlife-Managed: ~1 million



Recreation on Public Lands of Washington

Recreation

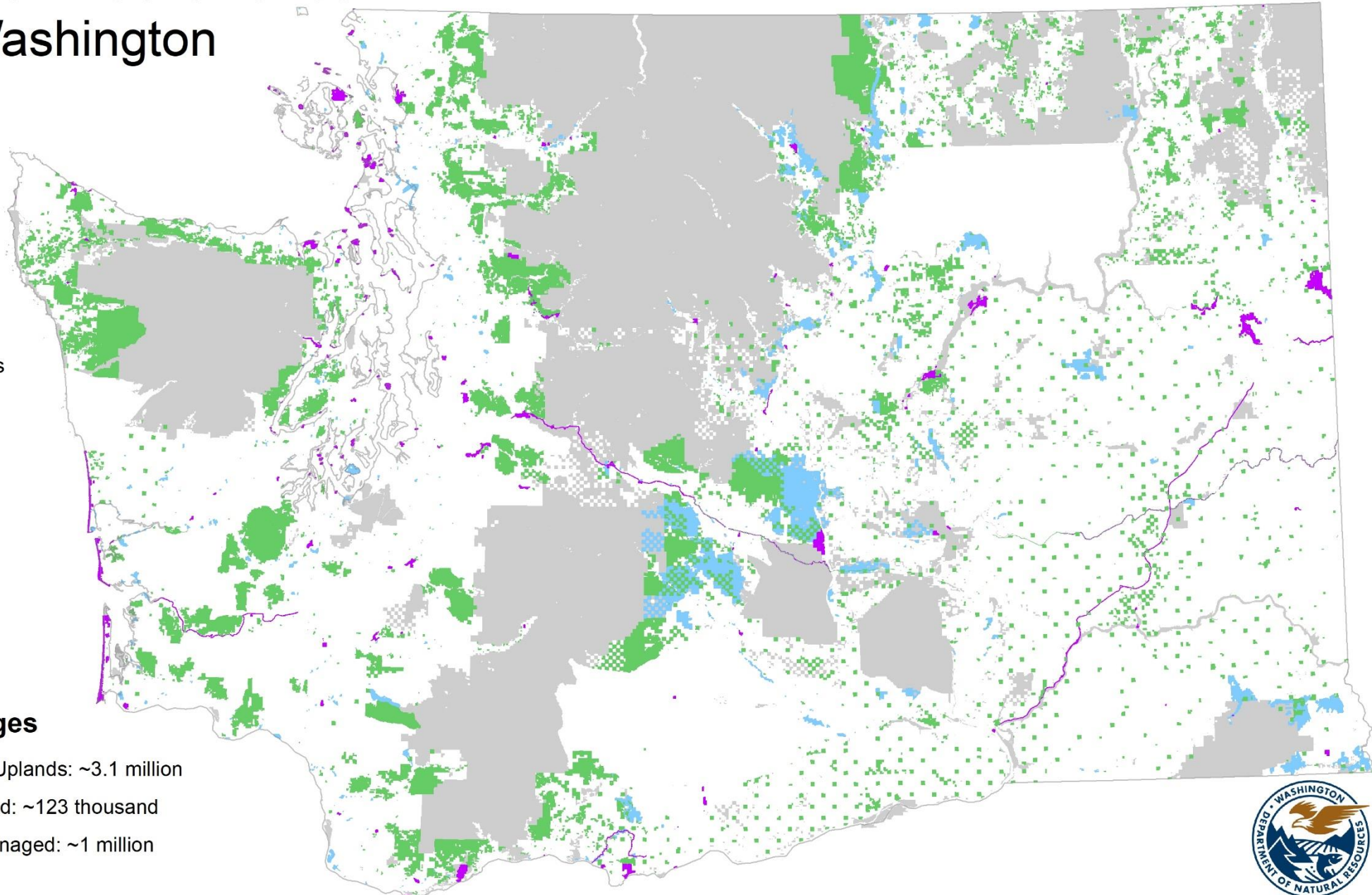
Natural Resources:
165 sites, ~1200 trail miles

State Parks:
125 developed parks,
~1180 trail miles

Fish and Wildlife:
~33 Wildlife areas
comprised of 215 Wildlife
Area Units,
~600 water access sites,
~125 trail miles

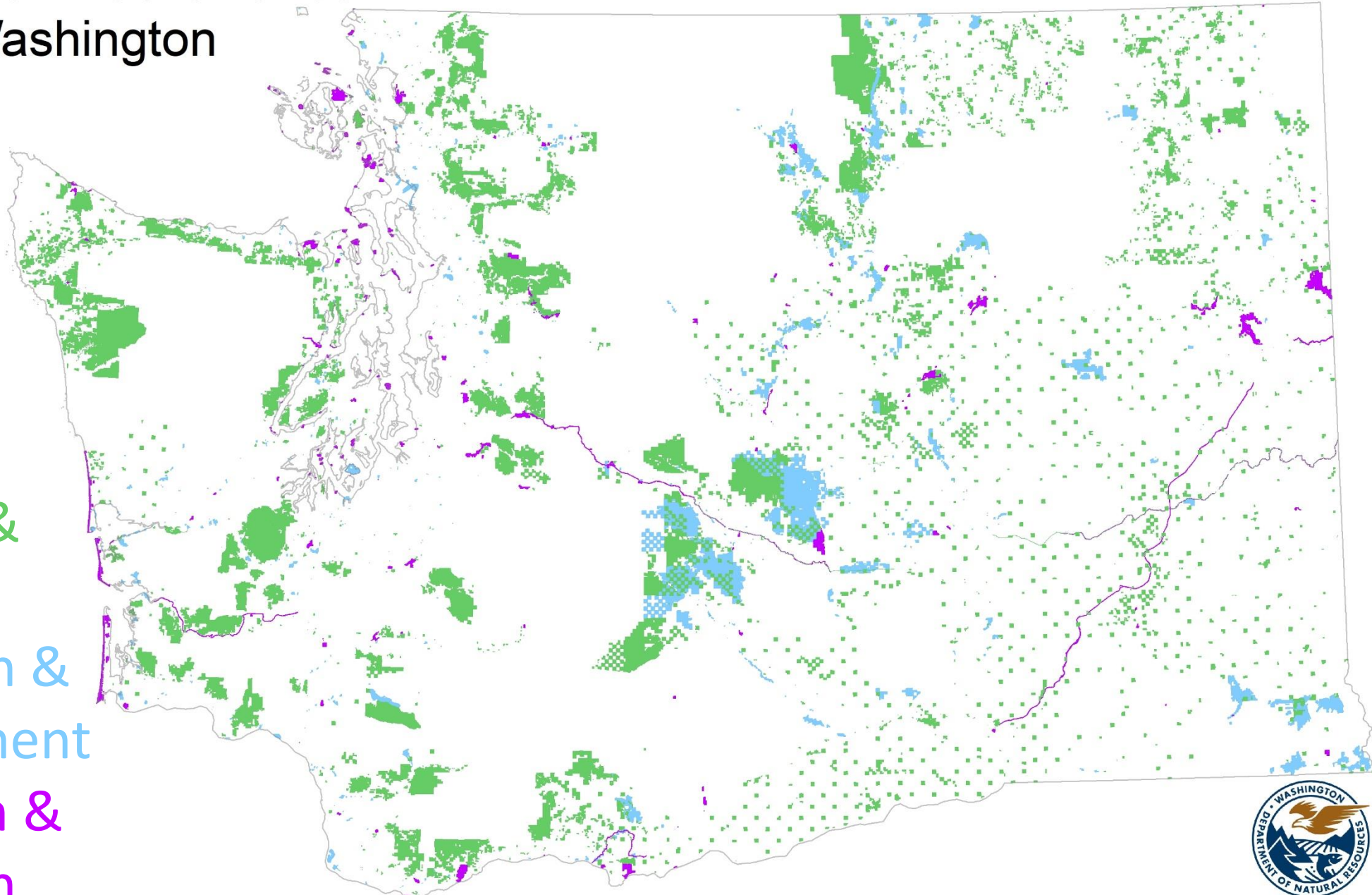
Public Land Acreages

-  WA DNR-Managed Uplands: ~3.1 million
-  State Parks-Managed: ~123 thousand
-  Fish and Wildlife-Managed: ~1 million
-  Federal : ~13 million



Recreation on Public Lands of Washington

Preserve &
Fund
Recreation &
Enhancement
Protection &
Recreation



ECOSYSTEM SERVICES

On Washington's Public Lands

Results Review: Outdoor Recreation & Public Lands

September 26, 2018

Jessie Martin | Program Director

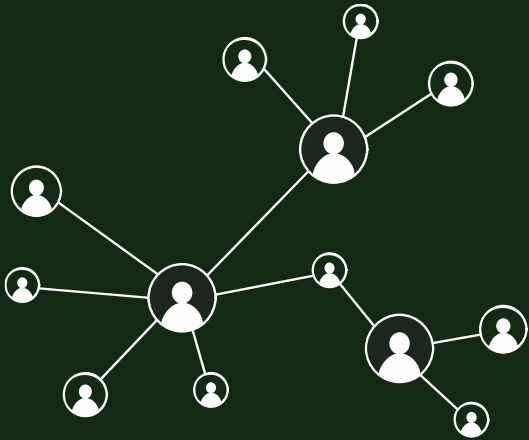
Johnny Mojica | Recreation Lead

EARTH
ECONOMICS 

Earth Economics is a leader in ecological economics and has provided innovative analysis and recommendations to governments, tribes, NGOs, private firms, and communities around the world.

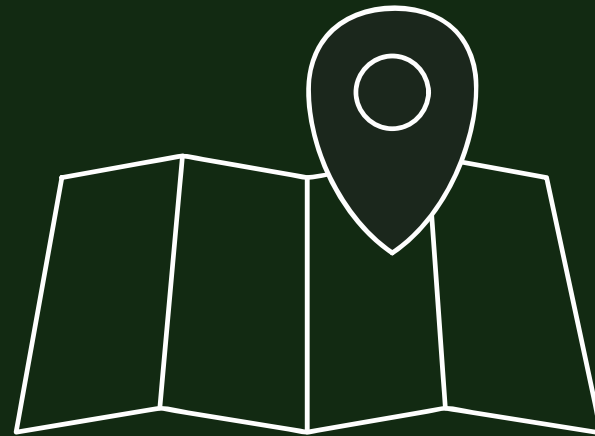


Our Approach



Awareness
Building

...



Place-Based
Analysis

...



Policy and
Finance



Annual **economic contributions** of outdoor recreation in Washington

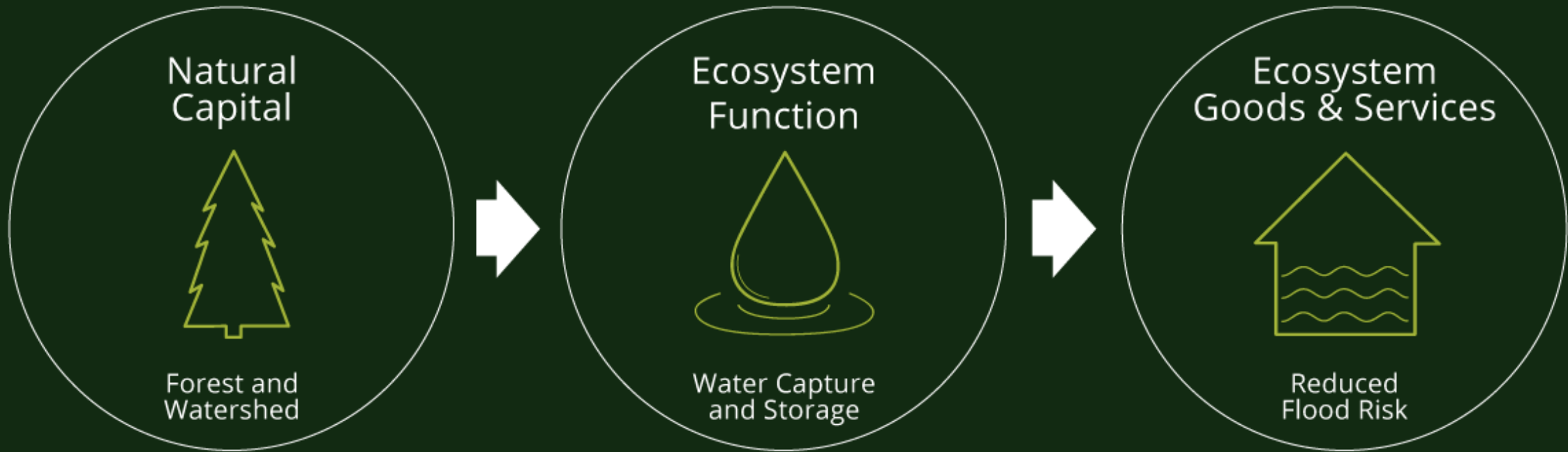
\$22 BILLION in spending

\$5 BILLION in wages

200,000 jobs supported

*2015 estimates





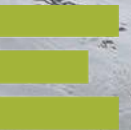
A person wearing a dark cap and jacket is seen from behind, fishing in a calm lake. The water reflects the sky and the surrounding forested mountains. The scene is peaceful and scenic.

ECOSYSTEM SERVICES
are benefits humans receive
from nature.






Storm buffering
\$100 MILLION
Avoided costs





Irrigation
\$650 MILLION
Property value

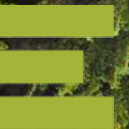




Carbon sequestration

\$532 MILLION

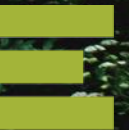
Social cost of carbon





WHAT'S NEXT?

Standardize the inclusion of ecosystem service values in the decision-making process.



QUESTIONS

Washington Department of Fish and Wildlife Lands

Public Lands Management for Fish, Wildlife and People

Cynthia Wilkerson, Lands Division Manager
Results WA, September 26, 2018



WDFW Mission



To preserve, protect and perpetuate fish, wildlife and ecosystems while providing sustainable fish and wildlife recreational and commercial opportunities.

WDFW Public Lands Strengthen Shared Values



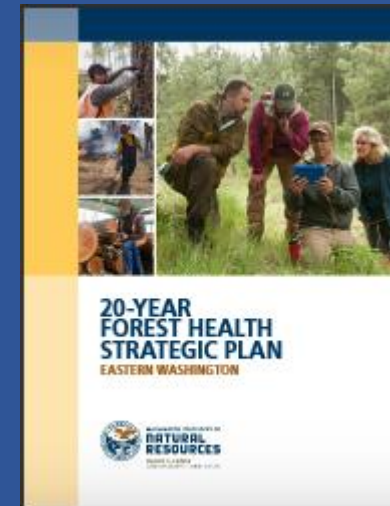
Ecosystem Services



Lands Management and Ecosystem Services



August 2018
Boyd's Fire – DFW treatment boundary



Benefits:

- Human health
- Public and community safety
- Healthy habitats
- Recreation
- Economic Vitality

facebook [Sign Up](#)

Washington State Department of Natural Resources
48 mins · [View](#)

Because Washington Department of Fish & Wildlife treated their forestland in northeast Washington to reduce wildfire hazards, firefighters were able to minimizing losses during the #BoydFire. Northwest Incident Management Team 11 Division Supervisor Cindi Tonasket-Ebel explains what goes into a forest treatment and how it helped crews on the frontlines of this wildfire.

It's a good example of how all landowners, even those who want different things from their land, can benefit from forest health restoration efforts.

296 Views
7 Likes 4 Shares



State Parks: Connecting People to Washington's Natural & Cultural Resources



Presented by: Nikki Fields

Parks Planner

September 26, 2018



EMBRACE YOUR
NATURE

*“In the end, we will conserve only what we love;
we will love only what we understand; and we will
understand only what we are taught.”*

-Baba Dioum

STATE PARKS MISSION

The Washington State Parks and Recreation Commission cares for Washington's most treasured lands, waters and historic places. State parks connect all Washingtonians to their diverse natural and cultural heritage and provide memorable recreational and educational experiences that enhance their lives.



STATE PARKS ACQUISITION & DEVELOPMENT STRATEGY

Overarching Goal

The state park system is recognized as the collection of places and experiences that are distinctly *Washington*.



SPECIFIC GOALS



- **Places to be**
 - Connecting people with Washington's iconic landscapes
- **Stories to know**
 - Engaging people in authentic Washington stories
- **Things to do**
 - Providing Washington's recreation mainstays
- **Ways to grow**
 - Inviting novices to experience Washington's outdoors
- **Something for everyone**
 - Improving the quality of life for all Washingtonians

PLACES TO BE

Connecting people with Washington's iconic landscapes



Riverside State Park



Palouse Falls State Park



Beacon Rock State Park



Curlew Lake State Park



Daroga State Park



Obstruction Pass State Park

STORIES TO KNOW

Engaging people in authentic Washington stories



Columbia Hills Historical State Park



Goldendale Observatory
State Park Heritage Site



Jackson House
State Park Heritage Site



Fort Casey Historical State Park



Deception Pass State Park



Palouse to Cascades State Park Trail

THINGS TO DO

Providing Washington's recreation mainstays



Riverside State Park



Beacon Rock State Park



Peshastin Pinnacles State Park



Potholes State Park



Deception Pass State Park



Spokane River Centennial State Park Trail

WAYS TO GROW

Opportunities for Washington's novices to get outdoors



Lake Sammamish State Park



Mount Spokane State Park



Willapa Hills State Park Trail



Mount Spokane State Park



Deception Pass State Park



Lake Sammamish State Park

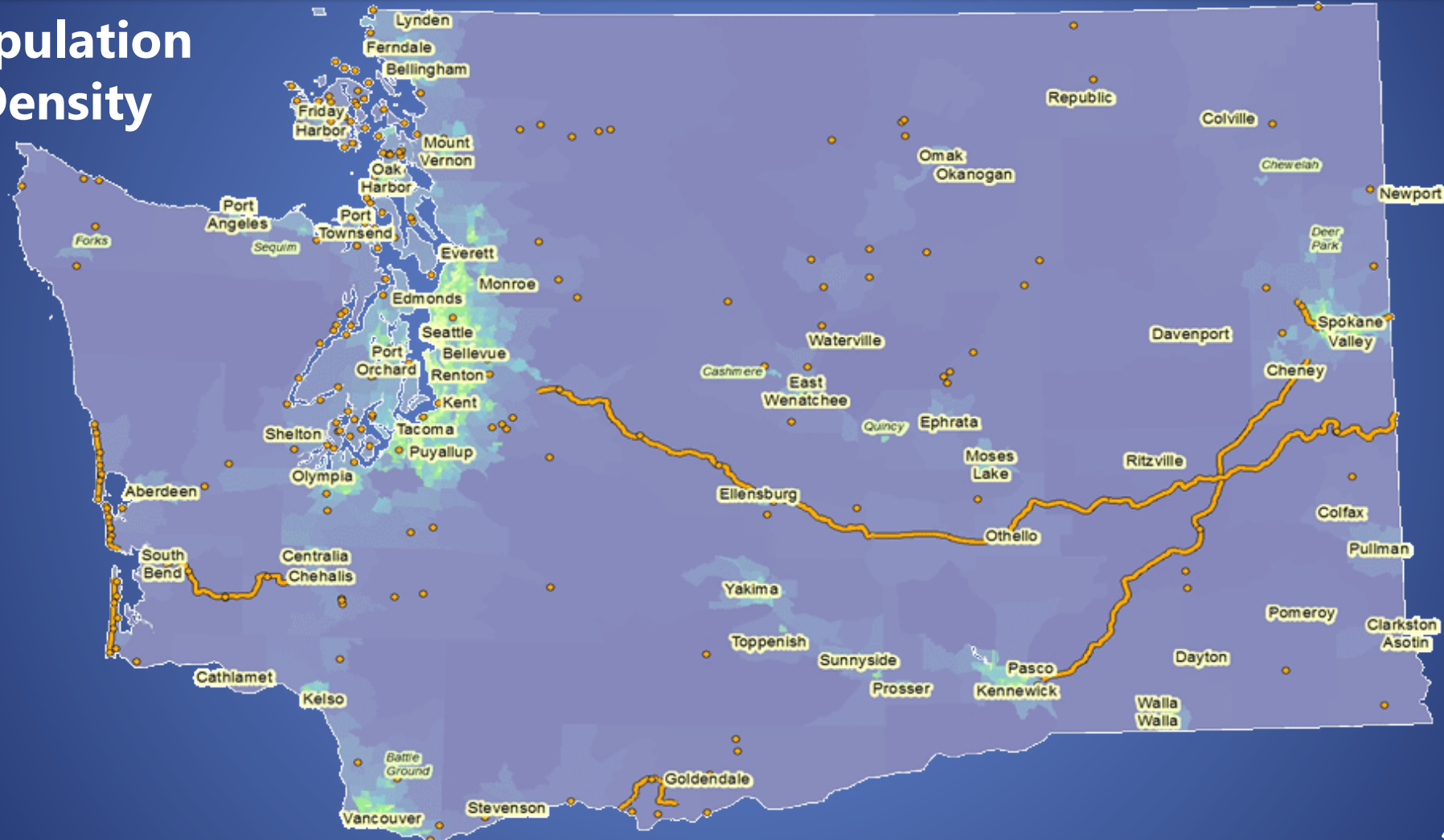
SOMETHING FOR EVERYONE

Improving quality of life for all Washingtonians



IMPLEMENTATION

Population Density



NISQUALLY STATE PARK



NEXT NEW STATE PARK



Miller Peninsula State Park Property



Fisk State Park Property



Westport Light State Park



EMBRACE YOUR NATURE



EMBRACE YOUR
NATURE

Recreation and Conservation Office

Kaleen Cottingham
Director

Results Washington, Governor's Results Review

September 26, 2018

Improving Access, Growing and Sustaining Public Recreation Lands



WASHINGTON STATE
Recreation and
Conservation Office

[Home](#)

[State Plan](#)

[Specific Plans](#)

[Explore Stories](#)

[Maps](#)

[Resources](#)



**WASHINGTON STATE RECREATION
AND CONSERVATION PLAN 2018-2022**
Vision for 2040 and priorities for recreation and conservation

[Learn More](#)



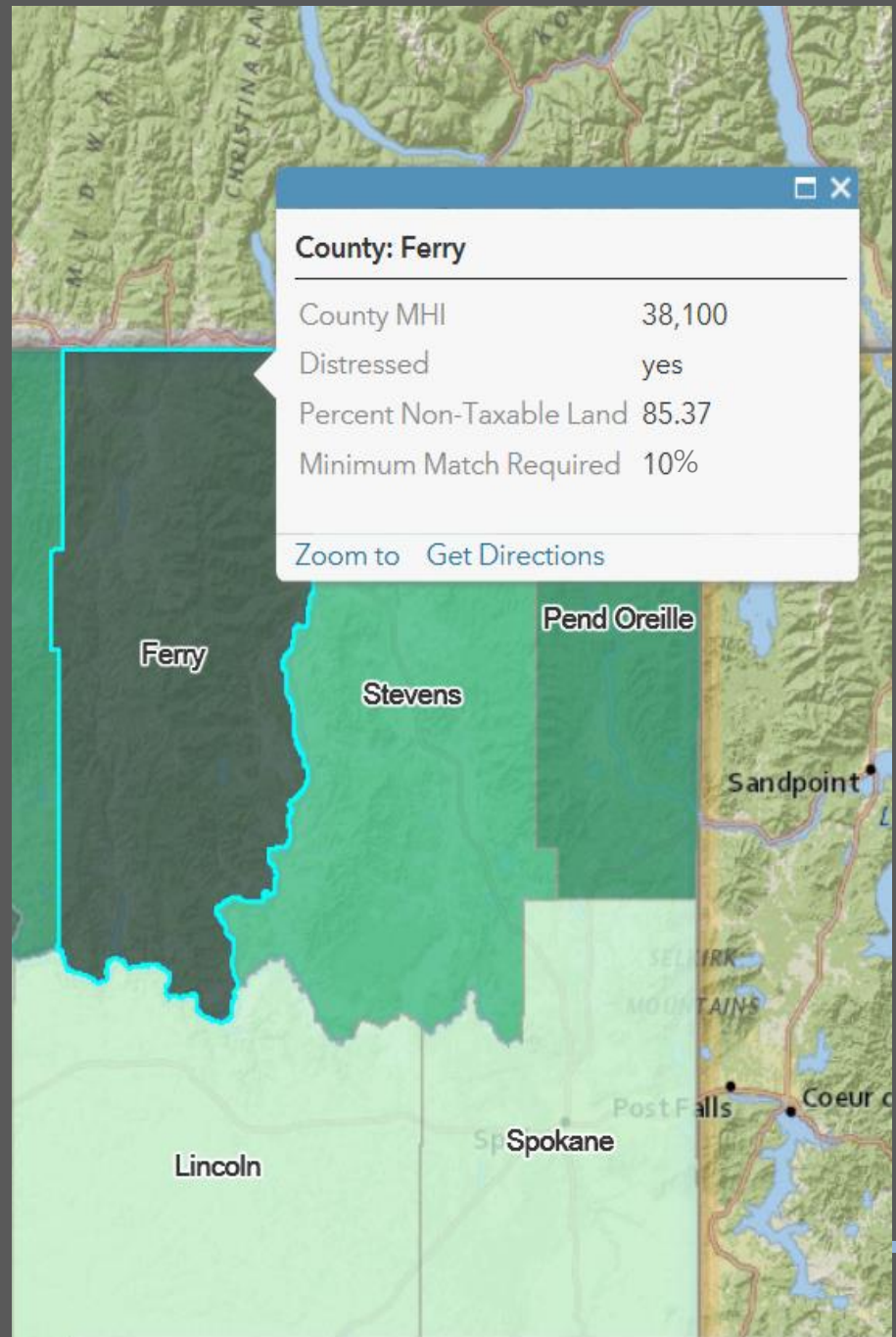
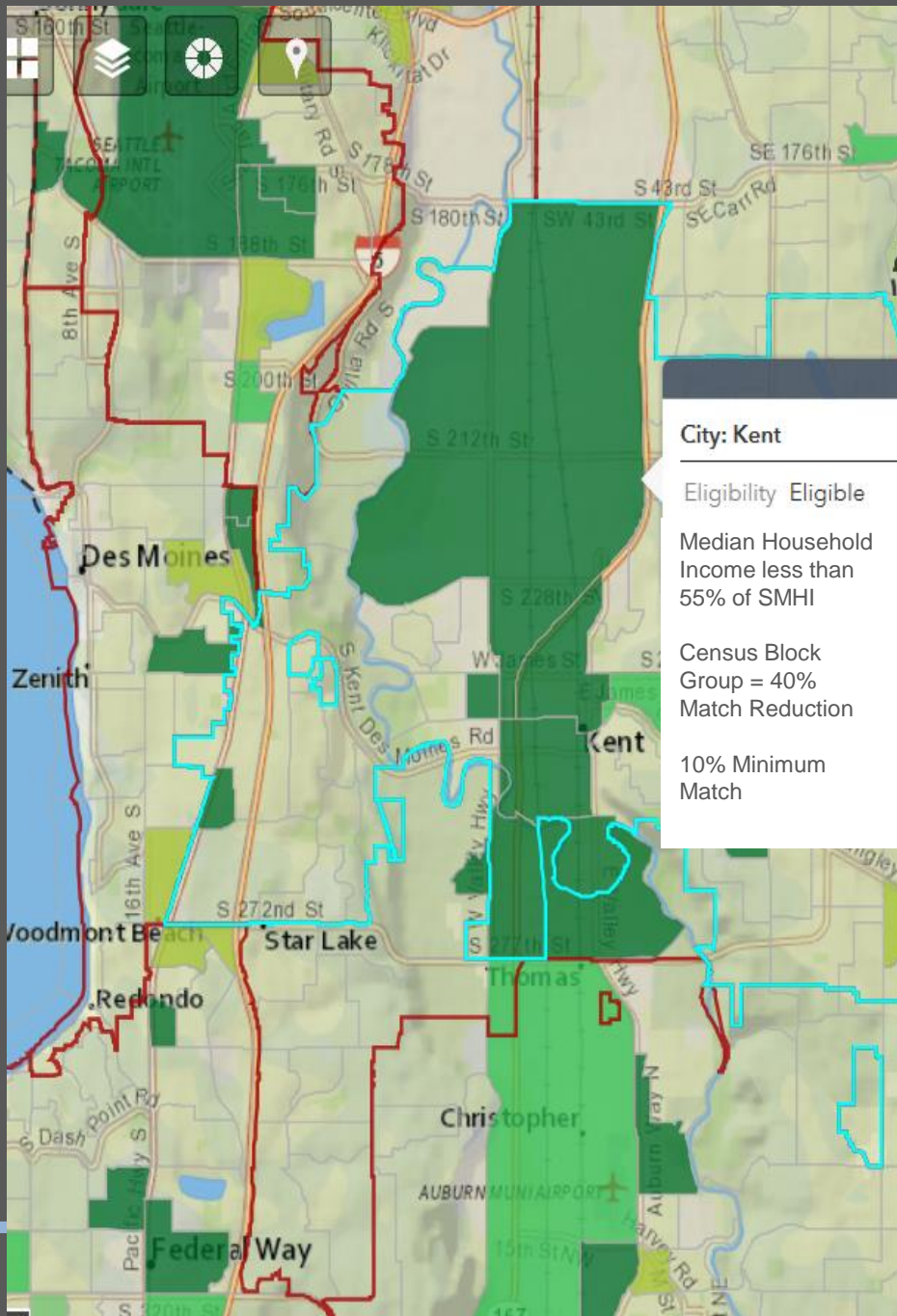
Equitable Access to Ecosystem Services: The Human Element

1. Priorities: "Need" Question

- Median Household Income
- Persons of Color
- Disabled Population
- Body Mass Index, Mortality Rate

2. Financial Assistance: Match Reduction Policy

- Communities/Counties In Need
 - Underserved Populations
 - Federal Disaster Areas
-

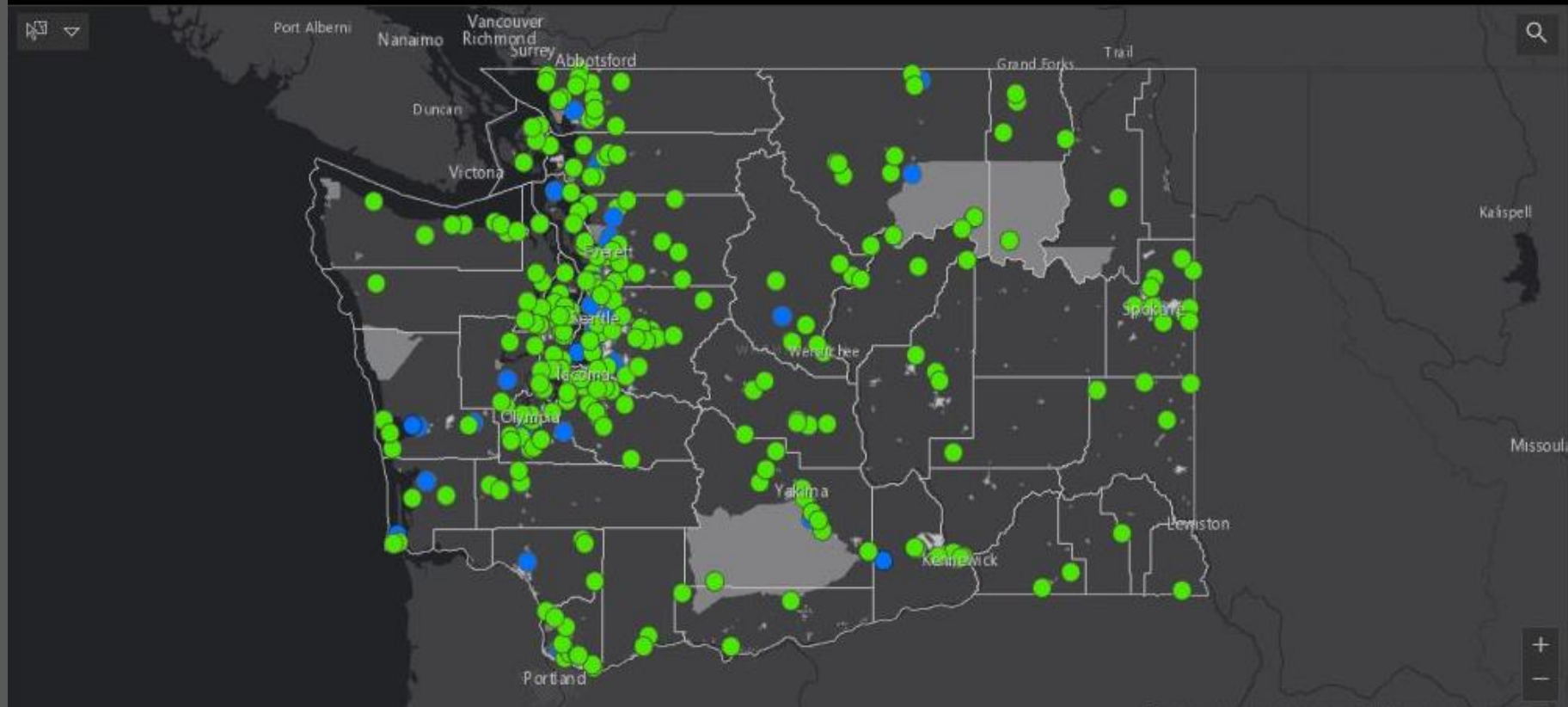


Match Reduction
\$5,677,907

RCO Grant Request
\$201,645,603

Number of Applications

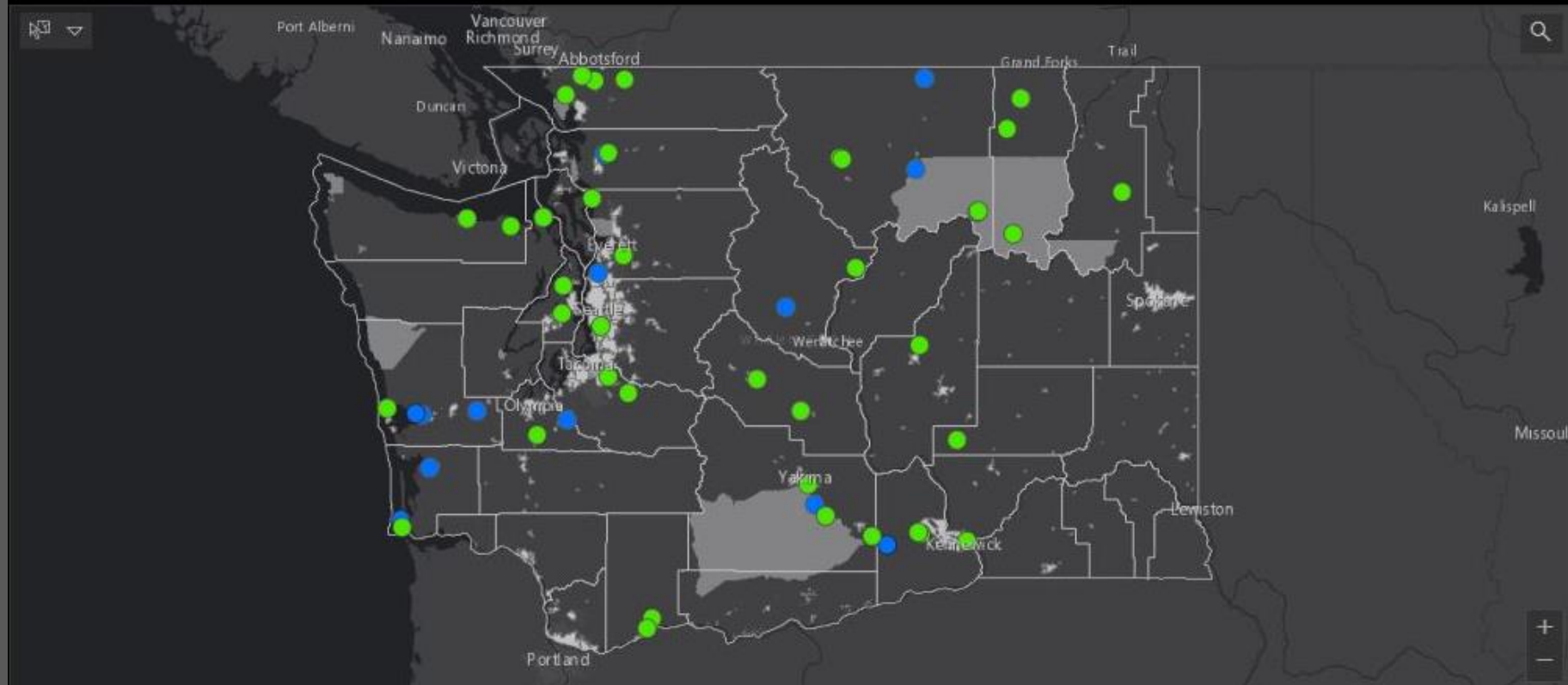
317



Match Reduction
\$5,677,907

RCO Grant Request
\$21,250,021

Number of Applications
57



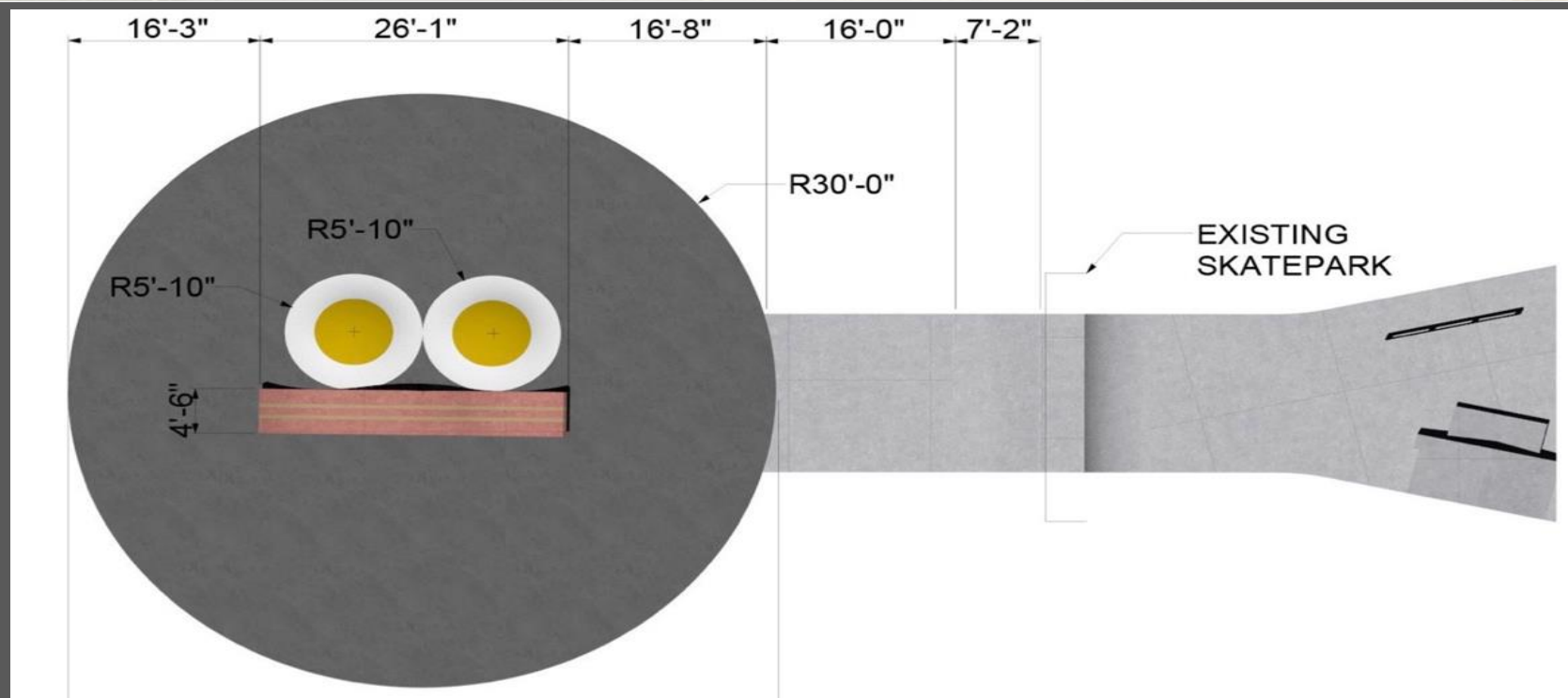
Town of Wilkeson

BACON AND EGGS SKATEABLE ART SKATE PARK

"Community in Need"

- Population = 490
- Median Household Income (MHI) = \$58,900 (95% of State MHI)
- 40% Min Match Required





City of Lynnwood

SOUTH LYNNWOOD PARK REDEVELOPMENT

"Underserved Population"

- Project Census Block Group MHI = 50% of State MHI
- 10% Min Match Required



The Future South Lynnwood Park



Community members requested a soccer field and basketball court throughout our engagement, 2017-2018



Concept plan with YAF elements circled

Ferry County

FERRY COUNTY RAIL-TRAIL PHASE 5

"County in Need"

- County Median Household Income (MHI) = 60% of State MHI
- "Distressed" County (high unemployment)
- Small Taxable Land Base (Less than 15%)







Photo Credit J. Forster Fanning

QUESTIONS



BACKGROUND ◀

MOUNT RAINIER INSTITUTE

Provide outstanding nature-based education experiences that are rooted in science and nurture the next generation of environmental stewards and leaders.



LOCATION AND AUDIENCE

Eatonville, Washington

School students

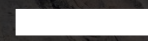




EDUCATION



PLACE



WE STRIVE TO CONNECT PEOPLE TO
THEIR PLACE



COMMUNITY

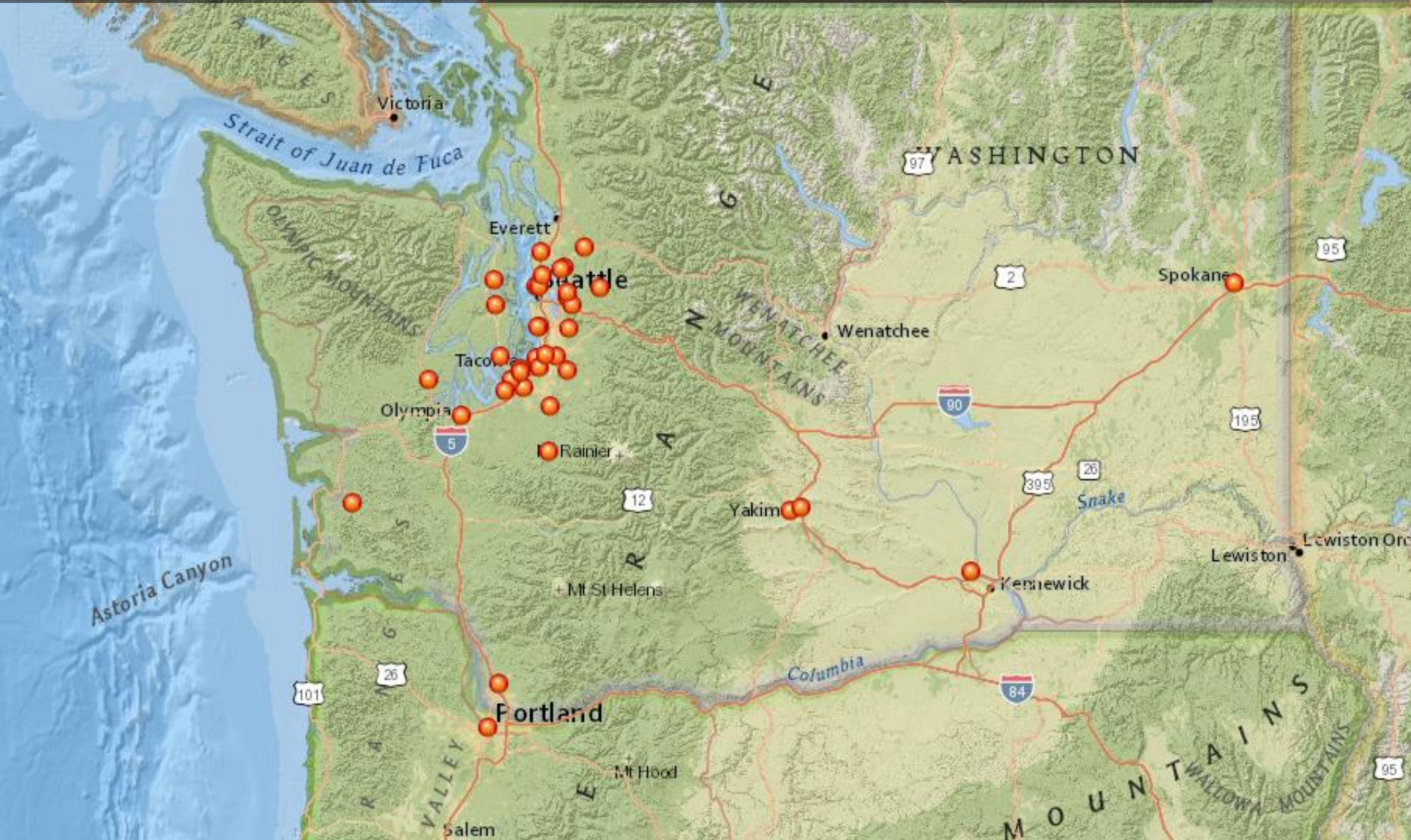
IT IS ESSENTIAL TO FOSTER A SENSE OF COMMUNITY AMONG STUDENTS, STAFF, AND OUR PARTNERS. MEANINGFUL COLLABORATION WITH ONE ANOTHER WILL CREATE AN ENDURING CONSERVATION ETHIC.

A person wearing a blue jacket is shown from behind, with their hands clasped behind their head. They are standing in a snowy mountain landscape with evergreen trees and snow-capped peaks under a cloudy sky. A semi-transparent black box is overlaid on the lower half of the image, containing text.

INSPIRATION

WE BELIEVE IT IS ESSENTIAL TO NOT ONLY EDUCATE BUT ALSO TO INSPIRE PEOPLE TO APPRECIATE THE JOY AND BEAUTY OF NATURE, AND TO BECOME ACTIVE STEWARDS.

Who We Serve



- 4060 PARTICIPANTS
- 46 SCHOOLS
- 20 DISTRICTS
- 55% AVERAGE FREE & REDUCED LUNCH
- 56% STUDENTS OF COLOR



WASHINGTON STATE
Recreation and
Conservation Office

LEAVE NO CHILD INSIDE

50% OF THE COSTS ARE COVERED BY
TUITION

OUTSIDE FUNDING IS CRITICAL TO OUTDOOR
SCHOOLS



A group of people, including children and adults, are gathered in a grassy field. In the foreground, a porcupine is visible, partially obscured by the text overlay. The background shows trees and a bright, sunny day.

PROGRAMS

4-12TH GRADE STUDENTS

3 TO 5 DAYS

**ALIGNED TO MEET STATE STANDARDS
SCIENCE & ENVIRONMENTAL LITERACY
CAREER PATHS**

CLIMATE CHANGE



WHY OUTDOOR SCHOOLS? ◀



***Healthier**

***Happier**

***Smarter**

- Graduation Rates (McFarland, 2014)
- Academic Achievement (Bartosh, 2005 & 2006)
- Classroom Engagement and Motivation (Yap, 1998, Secker, 2004)
- Improved Critical Thinking Skills (Athman and Monroe, 2004)
- Self-Esteem and Leadership Skills (American Institutes for Research 2005)
- Improved Community Collaboration Skills (Kearney, 2009)
- Better Stewards (Stern, et al., 2008)

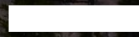
<http://www.k12.wa.us/EnvironmentSustainability/pubdocs/EEReport.pdf>

OUTDOOR SCHOOLS IN WASHINGTON

- ESTIMATED 60,000 STUDENTS SERVED IN MULTIDAY SCHOOL OVERNIGHT PROGRAMS
- 10% OF 4TH-10TH GRADERS
- POTENTIAL TO DO MORE

A group of approximately 20 people are gathered in a snowy mountain landscape, posing for a group photo. They are dressed in winter gear, including jackets, hats, and snow boots. Some individuals are holding snowballs, and a few are in the process of snowed out. The background features a large, snow-covered mountain peak under a clear blue sky, with evergreen trees scattered throughout the scene. The overall atmosphere is festive and captures a moment of winter fun.

IMPACT



QUESTIONS



Conservation Districts & Ecosystem Services

- Implement actions at the parcel level
- Leverage funds
- Your priorities are our priorities



depave Puget Sound



depave Puget Sound



depave Puget Sound



Holy Rosary Bilingual School

- 192 volunteers
- 15,000 sq. ft. of asphalt removed
- 373,700 gallons of water naturally filtered each year now
- Finally a place space for kids at school
- Filtering polluted rainwater and air
- Engaged a non-English speaking, lower income community
- Veterans Conservation Corps skill building and leadership



Veterans Conservation Corps



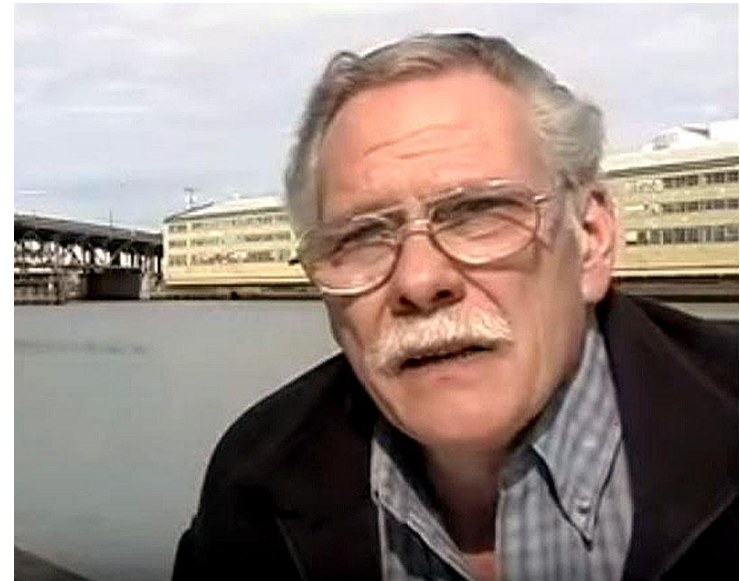
"Serving Those Who Served"



"Any Country Worth Defending Is Worth Preserving"



John Beal



"Any Country Worth Defending Is Worth Preserving"



"Serving Those Who Served"



"Serving Those Who Served"



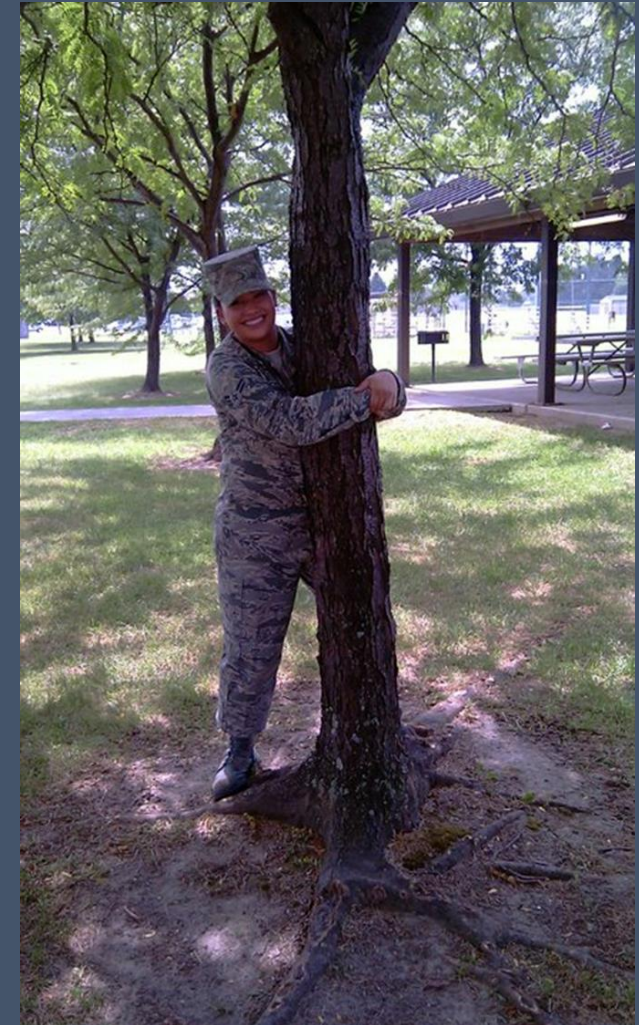
"Any Country Worth Defending Is Worth Preserving"

Veterans Conservation Corps

- Created in 2005 through SB 5539
- Connects Veterans to Washington's natural resources
- Operates in all 39 Counties
- Provides internships, volunteer opportunities, and training
- Interns earn a stipend and take part in supported employment

Goal of internship is to increase veteran's self-efficacy while supporting the operations of our partners' projects.

VETERANS CONSERVATION CORP



QUESTIONS

CLOSING